



# THERMADATA® WI-FI



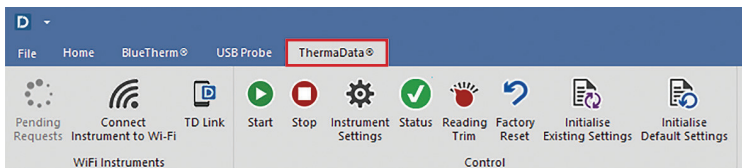
## Quick Start Guide

## SETTING UP

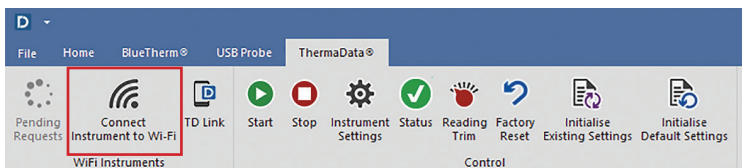
1. Insert 2 x AA batteries. The instrument will display 'Start Wi-Fi' followed by 'Initialization'.
2. Install the ThermoData Studio software on your PC via the download page on the ETI website.

## CONNECTING THE DEVICE TO THE INTERNET USING THE USB CABLE

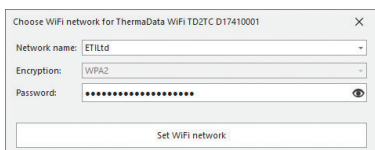
1. Connect the ThermoData® Wi-Fi to a PC or a laptop via the USB cable provided.
2. Open ThermoData Studio, ensure that ThermoData Wi-Fi is enabled within File > Options > Device Support.
3. Select the 'ThermoData®' Tab.



4. Click on 'Connect Instrument to Wi-Fi' and wait for the bar to load across, whilst the software scans for available networks.



5. Select the appropriate Wi-Fi connection from the dropdown menu, or manually enter the necessary details if the required Wi-Fi connection doesn't appear.



The device will connect and display a Wi-Fi signal indicator and a Cloud symbol in the top left corner of the device's LCD within two minutes. If one or both of these symbols do not appear please refer to the relevant section in our blog post.

## PAIRING THE DEVICE TO THERMADATA® STUDIO

1. Press the 'New' icon under the 'Home' tab.
2. The 'Active Instruments' window will open.
3. Click on the plus (+) symbol located at the bottom right of the window.
4. Select 'ThermoData® Wi-Fi'.
5. Enter the serial number from the back of the instrument into the textbox, and choose whether you want 'Read-Only' or 'Full Access' to the instrument.

## READ ONLY

6. If selecting 'Read Only' the user will have limited access to the device and can only view and download information. Select 'Read-Only' and enter the 8 Digit Connection Key stated on the back of the instrument underneath the serial number (fig. a)

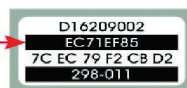


Fig. a

## FULL ACCESS

7. If selecting '**Full-Access**' the user will have unlimited access to the device and can adjust all the settings. Press the 'Start' button on the instrument 5 times repeatedly. A unique pairing code will then show on the instrument (fig. b). Enter this code into ThermaData Studio and press 'Go'.
8. If all details are correct, your instrument will appear in the 'Active Instruments' window as Active.



Fig. b

## RENAMING YOUR THERMADATA® WI-FI LOGGER

1. Right-click the instrument within the Active Instruments window and click 'Rename this instrument'.
2. Enter the name you require and press 'Change'.

## SETTING UP AND CHANGING THE SETTINGS (SETUP VIA USB OR WI-FI)

1. Right-click the instrument within the Active Instruments window and click 'Change settings for this instrument'.
2. Follow the set-up window that appears and press 'Finish' to confirm the settings.

## SETTING UP AUTO-ARCHIVE (SETUP VIA WI-FI ONLY)

1. Click 'Auto-Archive' under the 'Home' tab (fig. c).
2. Select 'Instruments' and 'Add'.
3. Choose the Wi-Fi logger(s) you would like to Auto-Archive and press 'Next'.
4. Select the Recording Interval for the instrument(s) before pressing 'Finish'.
5. Press the 'Start' button once on the Wi-Fi logger to confirm the settings.
6. Select 'Archiving' and choose the directory path from the '...' button or by typing in the directory path.
7. Using the dropdown boxes select the Sort By options relevant to your requirements.
8. Click 'Ok' to complete setting up Auto-Archive.

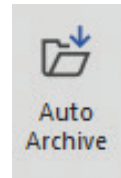


Fig. c

To change the settings of an Auto-Archived instrument at any time, right-click on the instrument within the Active Instruments window and click 'Change Auto-Archive Settings for this instrument'.

To change the directory path and Sort By options, click 'Auto-Archive' under the 'Home' tab and select 'Archiving'.

## USING TD LINK

1. Click 'TD Link' under the 'ThermaData®' tab.
2. Enter an email address and create a new password before clicking 'Register'.
3. Download the TD Link app from the Google Play Store or iOS App Store (fig. d).
4. Enter the same email address and password into the app and click 'Link' to view Wi-Fi loggers paired with your ThermaData® Studio software.



Fig. d

For more information on setting up and using a ThermaData® Wi-Fi logger or Auto-Archive, please visit our blog posts: <https://temperature.co.uk/category/thermadata-series/>, or via our software help guide which can be found under the '?' in the top-right corner of ThermaData® Studio.

## BATTERY REPLACEMENT

You will need a flat-headed screwdriver (provided in box).

1. Place the instrument display-down on a solid surface.
2. Unscrew and remove the battery cover.
3. Remove batteries (top one first).
4. Fit new batteries, noting the polarities marked on the plastic.
5. Replace battery cover, then tighten the battery screw.
6. Dispose of the old batteries appropriately.

If this is the first time the instrument has been used then it will need setting up in ThermaData® Studio. If it has previously been used then it will attempt to reconnect to the Wi-Fi and continue recording. Please note that the instrument may take a few minutes to connect.

**WARNING:** IPA and other solvents may cause damage to the case and screen of this instrument.

## INSTRUMENT RECORD CARD FOR THERMADATA® HUMIDITY INSTRUMENTS ONLY

	REFERENCE	INSTRUMENT
TEMPERATURE		
HUMIDITY		

Serial No. \_\_\_\_\_

Calibrated by \_\_\_\_\_ Date \_\_\_\_\_

This instrument has been checked or calibrated against reference instrument(s) calibrated by a UKAS Accredited Calibration Laboratory.

**PLEASE NOTE:** Due to regular software updates, please visit the download page on our website [etiltd.com/downloads](http://etiltd.com/downloads) to ensure you have the latest version of ThermaData® Studio.

**Front cover products from left to right:** ThermaData TD2F (298-111) / ThermaData TD (298-001) / ThermaData TD2TC Type K (298-121) / ThermaData TD2TC Type T (298-721) / ThermaData Pharm TD2F (298-111-PHM)



Manufactured by  
Electronic Temperature Instruments Ltd  
Worthing · West Sussex · BN14 8HQ  
01903 202151 · [sales@etiltd.com](mailto:sales@etiltd.com) · [etiltd.com](http://etiltd.com)

